

PEG

Preferred Equipment Group

2024 Tahoe \$ 71,610

Color

Trim

H0Y - 1LT/1SP/2LT/2Z7-Leather, Jet Black, Interior Trim

Engine

L84 - 3.5L EcoTec3 V-8, DI, Dynamic Fuel Mgt, V V

T

Transmission

MHS - 10-Speed Automatic

Emissions

FE9 - Federal Emissions

Ordered Options

Z27 - Z71 Preferred Equipment Group

A2X - Power Seat Adjuster (Driver's Side)

A45 - Memory Settings, recalls presets for driver pwr seat

A50 - Seats: Front, Bucket, Full Feature

AS8 - Seat, 3rd row 60/40 Bench, power

ATH - Keyless Open & Keyless Start

ATT - Seat, 2nd row 60/40, split-folding, pwr release

AYQ - RESTRAINT SYSTEM SEAT, INFLATABLE, DRIVER & PASS FRT, F

B30 - Floor Covering: Carpet, Color Keyed

BTV - Remote Engine Starting Pkg

BVZ - Assist Steps, none

C6H - GVW Rating 7500 Lbs

CJ2 - Climate Control, Electronic - Multi-zone

D07 - Center Floor Console, fixed

DD8 - ISRV Mirror, Electro-chromatic

DXR - Mirror, Outside, Power, Heated, Auto-Dimming w/Turn ind

FE9 - Federal Emissions

G6N - Silver Sage Metallic

GU5 - Rear Axle: 3.23 Ratio

H0Y - 1LT/1SP/2LT/2Z7-Leather, Jet Black, Interior Trim

IOK - Chevrolet Infotainment, Enhanced connectivity 2.0

JHD - Hill Descent Control

JL1 - Integrated Trailer Brake Controller

K34 - Cruise Control

KA1 - Heated Seats, Front

KA6 - Heated Seats: 2nd Row

KC4 - Cooler, Engine Oil

KI3 - Heated Steering Wheel

KI4 - 120 Volt Electrical Receptacle, In Cab

KNP - Transmission Cooling System

KW5 - Alternator, 220 AMP

L84 - Engine:

MHS - 10-Spe

N38 - Steering

NHT - Max Tra

NQH - Transfe

NZU - Wheels

PED - Chevy

PRF - 3 Years

PZ8 - Hitch Gu

QAE - Tires: 2

R6Q - Proces

RC1 - Skid Pl

RIB - LPO- All

RVS - LPO - A

T8Z - Buckle-1

TC2 - Liftgate,

TQ5 - Headlar

U2K - SiriusXM

UD5 - Parking

UDV - Driver I

UE1 - OnStar

UE4 - Followir

UET - Smart T

UEU - Sensor,

UFG - Sensor,

UGA - Red Re

UHX - Lane Ki

UHY - Automa

UK3 - Radio C

UKC - Lane Cl

UKJ - Sensor,

UKK - Sensor, Pedestrian Detection

UTJ - Theft Protection System, Unauthorized Entry

UV2 - Surround Vision, HD

V03 - Cooling system, extra capacity

V54 - Luggage Rack, side rails, painted

VK3 - Front License Plate Mounting Provisions

WPD - Driver Alert Package

WPL - Luxury

WUA - Fascia,

YM8 - LPO Pr

Z82 - Trailerin

ZL6 - Advance

ZW7 - Suspen

PEG
2CX - Custom Trail Boss Preferred Equipment Group

2024 TRAIL BOSS \$55,220

Color
GAZ - Summit White

Trim
H0U - 1WT/1LT/1SP/2LT/1FL/1LS-Cloth, Jet Black, Interior Trim

Engine
L84 - Engine: 5.3L EcoTec3 V-8, DI, Dynamic Fuel Mgt, V V T

Transmission
MHT - 10-Speed Automatic

Emissions
FE9 - Federal Emissions

Ordered Options

2CX - Custom Trail Boss Preferred Equipment Group

A2X - Power Seat Adjuster (Driver's Side)

AKO - Glass, Deep Tinted

AQQ - Keyless Remote Entry

AY0 - Airbags-frontal, front seat side-impact and roof-rail

AZ3 - Seats: Front 40/20/40 Split-Bench, Full Feature

B1J - Liner, Rear Wheelhouse

B30 - Floor Covering: Carpet, Color Keyed

BTV - Remote Engine Starting Pkg

C49 - Defogger, Rear Window, Electric

C5Y - GVW Rating 7100 Lbs

CGN - Chevytec Spray-on Liner

DLF - Mirrors, O/S: Power, Heated

E63 - Durabed

FE9 - Federal Emissions

G80 - Auto Locking Differential, Rear

GAZ - Summit White

GU5 - Rear Axle: 3.23 Ratio

H0U - 1WT/1LT/1SP/2LT/1FL/1LS-Cloth, Jet Black, Interior Trim

IOR - Chevrolet Infotainment, 7" Color Screen

JHD - Hill Descent Control

K34 - Cruise Control

K47 - Heavy Duty Air Filter

KC4 - Cooler, Engine Oil

KI4 - 120 Volt Electrical Receptacle, In Cab

KNP - Transmission Cooling System

KW7 - Alternator, 170 AMP

L84 - Engine: 5.3L, EcoTec3 V-8, DI, Dynamic Fuel Mgt, V V T

MHT - 10-Speed Automatic

N10 - Dual Exhaust System

NQH - Transfer Case: Active, 2-Speed, Autotrac, Rotary Dial

NZZ - Skid Plate

PCX - 1CX/2C

PED - Chevy 5

PRF - 3 Years

QK2 - Multi-Fl

QT5 - Tailgate

R30 - Tires: L

RD1 - Wheels

RFQ - Focus

SAF - Spare T

T8Z - Buckle-1

TQ5 - Headlar

U2K - SiriusXM

UBI - 2-USBs,

UE1 - OnStar

UE4 - Followir

UEU - Sensor,

UF2 - Lighting

UGA - Red Re

UHX - Lane Ki

UHY - Automa

UKJ - Sensor,

UQF - Speake

UTJ - Theft Pr

UVB - Rear Vi

VK3 - Front Li

VQK - LPO - 5

VT2 - LPO - A:

XCQ - Tire, Sp

YM8 - LPO Pr

Z7X - Suspens

Z82 - Trailing Package

PEG

2024 TRAIL Boss # 55,220

s Preferred Equipment Group

Color

GAZ - Summit White

Trim

H0U - 1WT/1LT/1SP/2LT/1FL/1LS-Cloth, Jet Black, Interior

Trim

Engine

L84 - Engine: 5.3L, EcoTec3 V-8, DI, Dynamic Fuel Mgt, V V T

Transmission

MHT - 10-Speed Automatic

Emissions

FE9 - Federal Emissions

Ordered Options

2CX - Custom Trail Boss Preferred Equipment Group

A2X - Power Seat Adjuster (Driver's Side)

AKO - Glass, Deep Tinted

AQQ - Keyless Remote Entry

AY0 - Airbags-frontal, front seat side-impact and roof-rail

AZ3 - Seats: Front 40/20/40 Split-Bench, Full Feature

B1J - Liner, Rear Wheelhouse

B30 - Floor Covering: Carpet, Color Keyed

BTV - Remote Engine Starting Pkg

C49 - Defogger, Rear Window, Electric

C5Y - GVW Rating 7100 Lbs

CGN - Chevytec Spray-on Liner

DLF - Mirrors, O/S: Power, Heated

E63 - Durabed

FE9 - Federal Emissions

G80 - Auto Locking Differential, Rear

GAZ - Summit White

GU5 - Rear Axle: 3.23 Ratio

H0U - 1WT/1LT/1SP/2LT/1FL/1LS-Cloth, Jet Black, Interior Trim

IOR - Chevrolet Infotainment, 7" Color Screen

JHD - Hill Descent Control

K34 - Cruise Control

K47 - Heavy Duty Air Filter

KC4 - Cooler, Engine Oil

KI4 - 120 Volt Electrical Receptacle, In Cab

KNP - Transmission Cooling System

KW7 - Alternator, 170 AMP

L84 - Engine: 5.3L, EcoTec3 V-8, DI, Dynamic Fuel Mgt, V V T

MHT - 10-Speed Automatic

N10 - Dual Exhaust System

NQH - Transfer Case: Active, 2-Speed, Autotrac, Rotary Dial

NZZ - Skid Plate

PCX - 1CX/2CX

PED - Chevy Trail

PRF - 3 Years

QK2 - Multi-Function

QT5 - Tailgate

R30 - Tires: LT

RD1 - Wheels

RFQ - Focus

SAF - Spare Tire

T8Z - Buckle-1

TQ5 - Headlamps

U2K - SiriusXM

UBI - 2-USBs

UE1 - OnStar

UE4 - FollowMe Home

UEU - Sensor

UF2 - Lighting

UGA - Red Recovery

UHX - Lane Keep

UHY - Automa

UKJ - Sensor

UQF - Speaker

UTJ - Theft Protection

UVB - Rear View

VK3 - Front Liner

VQK - LPO - S

VT2 - LPO - A

XCQ - Tire, Sp

YM8 - LPO Pr

Z7X - Suspension

Z82 - Trailing Package

Attending NADA 2024?
See what's new at vAuto in booth #15274W.
Hover to save your spot.

Jeff Shelley
PREMIER CHEVROLET GMC OF LITTLEFIELD
MP89412



- Provisioning
- Appraising
- Pricing
- Merchandising
- Wholesaling

Recent

[New Appraisal](#) [Quick Lookup](#)

Appraisal

TRADE \$ 32,000

Vehicle Information

Salesperson Information

Summary

Tags

VIN* [REDACTED]

Odometer* 52555

Year* [REDACTED]

Make* Chevrolet

Model* [REDACTED]

Series* [REDACTED]

Body Type SUV

Cylinders 8

Transmission Automatic

Color Silver

Salesperson Shelley, Jeff

Not a trade

Customer Information

First Name Gary

Last Name Maddox

Home Phone

Email

Address

Postal Code 79339

Disposition

- Retail
- Wholesale
- Subprime

Notify Appraisers

- Arnolie, Arthur
- Barnett, Tim
- Barnett, Will
- BINGHAM, NIFA
- Blacklock, Randon
- Call, Gerry
- CIRUTI, JOSEPH
- Cowan, Chris
- Deckert, Mark
- Deleon, Christian
- Fluharty, Randy
- Franco, Amy



Reports

Links

Vehicle Additional

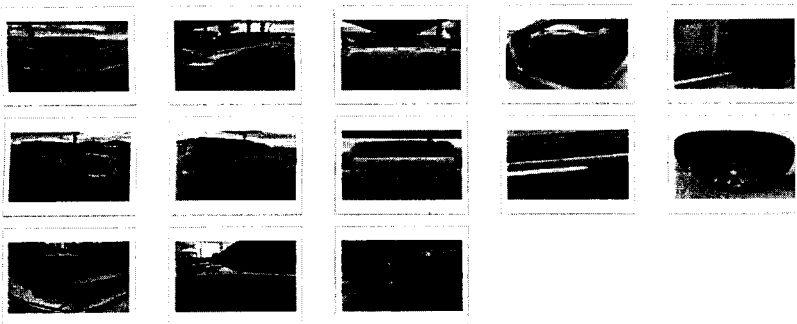
Source

Vehicle of Interest

Vehicle Condition

Photos

Add | Delete



Appraisal images of vehicles that are not in inventory are kept for 60 days.

Notes

[Empty text area for notes]

J.D. Power

Condition

Series



Provisioning Appraising Pricing Merchandising Wholesaling

Recent

Appraisal

TRADE @ 24,000

New Appraisal Quick Lookup

Vehicle Information

Salesperson Information

Summary

Tags

VIN *

Salesperson Shelley, Jeff

Disposition

Retail Wholesale Subprime

Odometer *

Not a trade

Notify Appraisers

Year *

Arnoie, Arthur

Barnett, Tim

Make * Chevrolet

Barnett, Will

Model * Silverado

BINGHAM, NIFA

Blacklock, Randon

Series

Call, Gerry

CIRUTI, JOSEPH

Body Type Truck

Cowan, Chris

Deckert, Mark

Cylinders 8

Deleon, Christian

Fluharty, Randy

Franco, Amy

Transmission Automatic

Color

Customer Information

First Name

Last Name

Home Phone

Email

Address

Postal Code

Reports

Links

Actions

Cancel

Vehicle Additional

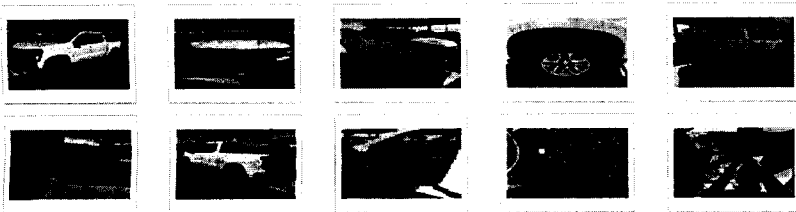
Source

Vehicle of Interest

Vehicle Condition

Photos

Add | Delete



Appraisal images of vehicles that are not in inventory are kept for 60 days.

Notes

J.D. Power

Condition

- Clean
- Average
- Rough

Series

- Silverado 1500 Crew Cab LT 4WD



Provisioning Appraising Pricing Merchandising Wholesaling

Recent

New Appraisal Quick Lookup

Appraisal

TRADE \$ 20,000

Vehicle Information

Salesperson Information

Summary

Tags

VIN* 1GCPYCE1129000000000000

Salesperson Shelley, Jeff

Disposition

Retail Wholesale Subprime

Odometer 7

Not a trade

Notify Appraisers

Year 2000

Customer Information

- Arnoie, Arthur
- Barnett, Tim
- Barnett, Will
- BINGHAM, NIFA
- Blacklock, Randon
- Call, Gerry
- CIRUTI, JOSEPH
- Cowan, Chris
- Deckert, Mark
- Deleon, Christian
- Fluharty, Randy
- Franco, Amy

Make* Chevrolet

First Name

Model* Silverado

Last Name

Series D

Home Phone

Body Type Truck

Email

Cylinders 8

Address

Transmission Automatic

Postal Code

Color

Reports

Links

Actions

Cancel

Vehicle Additional

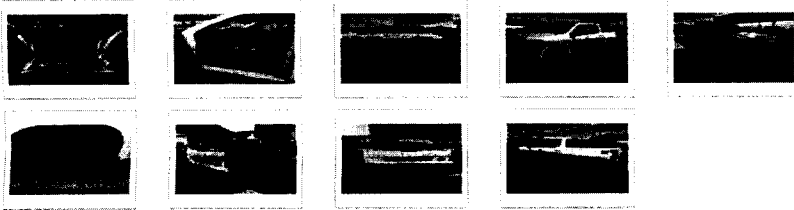
Source

Vehicle of Interest

Vehicle Condition

Photos

Add | Delete



Appraisal images of vehicles that are not in inventory are kept for 60 days.

Notes

J.D. Power

Condition

- Clean
- Average
- Rough

Series

- Silverado 1500 Crew Cab Custom Trail Boss 4WD

Attending NADA 2024?
See what's new at vAuto in booth #15274W.
Hover to save your spot.

Jeff Shelley
PREMIER CHEVROLET GMC OF LITTLEFIELD
MP89412



Provisioning Appraising Pricing Merchandising Wholesaling

Recent

Appraisal

TRADE \$16,000

New Appraisal Quick Lookup

Vehicle Information

Salesperson Information

Summary

Tags

VIN * Go

Salesperson Shelley, Jeff

Disposition
 Retail Wholesale Subprime

Odometer *

Not a trade

Notify Appraisers

Year

Customer Information

- Arnoie, Arthur
- Barnett, Tim
- Barnett, Will
- BINGHAM, NIFA
- Blacklock, Randon
- Call, Gerry
- CIRUTI, JOSEPH
- Cowan, Chris
- Deckert, Mark
- Deleon, Christian
- Fluharty, Randy
- Franco, Amy

Make * Chevrolet

First Name

Model *

Last Name

Series

Home Phone

Body Type SUV

Email

Cylinders 8

Address

Transmission Automatic

Postal Code

Color

Reports Links

Actions Cancel

Vehicle Additional

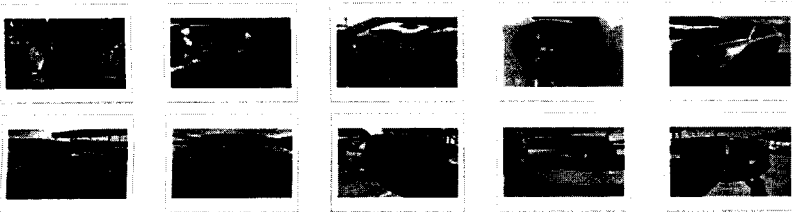
Source

Vehicle of Interest

Vehicle Condition

Photos

Add | Delete



Appraisal images of vehicles that are not in inventory are kept for 60 days.

Notes

J.D. Power

Condition

- Clean
- Average
- Rough

Series

- Tahoe Utility 4D LT 4WD

GENE MESSER



CHEVROLET

December 14, 2023

Lamb County Sheriff's Department:

We wanted to take a moment to express our sincere appreciation for your trust in our Dealership, in regards to the enclosed bid.

If we can be of further assistance please contact us.

Sincerely,

Jonathan Lucio
Internet Sales Specialist

GENE MESSER



CHEVROLET

December 14, 2023

Lamb County Sheriff's Department:

We wanted to take a moment to express our sincere appreciation for your trust in our Dealership, in regards to the enclosed bid.

If we can be of further assistance please contact us.

Sincerely,

Jonathan Lucio
Internet Sales Specialist



Vehicle Locator

Detail Report for Customer

GENE MESSER CHEVROLET
 1302 SOUTH LOOP 289, LUBBOCK, TX, 79412
 806-747-3211

Customer/Company: undefined
 Address: undefined

Sales Consultant:

Vehicle #1: 2024 Chevrolet 1500 Silverado	VIN/Order #	MSRP	Stock #
	3GCUDCED7RG187765	\$55,865.00	N/A
Additional Vehicle Information			
GM Marketing Information			

Body Style: CK10543-4WD, Short Crew
 PEG: 2CX-Custom Trail Boss Preferred Equipment Group
 Primary Color: GAZ-Summit White
 Trim: H0U-1WT/1LT/1SP/2LT/1FL/1LS-Cloth, Jet Black, Interior Trim
 Engine: L84-Engine: 5.3L, EcoTec3 V-8, DI, Dynamic Fuel Mgt, V V T
 Transmission: MHT-10-Speed Automatic

*\$ 53615.⁰⁰
 x PEGS*

- Options: 2CX-Custom Trail Boss Preferred Equipment Group
- A2X-Power Seat Adjuster (Driver's Side)
- AKO-Glass, Deep Tinted
- AQQ-Keyless Remote Entry
- AZ3-Seats: Front 40/20/40 Split-Bench, Full Feature
- B30-Floor Covering: Carpet, Color Keyed
- BTV-Remote Engine Starting Pkg
- C49-Defogger, Rear Window, Electric
- C5Y-GVV Rating 7100 Lbs
- DLF-Mirrors, O/S: Power, Heated
- E63-Durabed
- FE9-Federal Emissions
- G80-Auto Locking Differential, Rear
- GAZ-Summit White
- GU5-Rear Axle: 3.23 Ratio
- H0U-1WT/1LT/1SP/2LT/1FL/1LS-Cloth, Jet Black, Interior Trim
- IOR-Chevrolet Infotainment, 7" Color Screen
- JHD-Hill Descent Control
- JL1-Integrated Trailer Brake Controller
- K34-Cruise Control
- K47-Heavy Duty Air Filter
- KC4-Cooler, Engine Oil
- K14-120 Volt Electrical Receptacle, In Cab
- KNP-Transmission Cooling System
- KW7-Alternator, 170 AMP
- L84-Engine: 5.3L, EcoTec3 V-8, DI, Dynamic Fuel Mgt, V V T
- MHT-10-Speed Automatic
- N10-Dual Exhaust System
- NQH-Transfer Case: Active, 2-Speed, Autotrac, Rotary Dial
- NZZ-Skid Plate
- PCX-1CX/2CX Convenience 1 Package
- PRF-3 Years of Onstar Remote Access
- QK1-Standard Tailgate
- QT5-Tailgate Function--EZ Lift, Power Lock & Release
- R30-Tires: LT275/65 R18 "C" All Terrain, Blackwall
- RD1-Wheels, 18" x 8.5" High Gloss Black Painted Aluminum
- RFQ-Focused Ordering Configuration
- SAF-Spare Tire Lock
- TQ5-Headlamps, Intellibeam
- U2K-SiriusXM Satellite Radio (subscription)
- UBI-2-USBs, Second Row Charge/Data Ports
- UE1-OnStar Communication System
- UE4-Following Distance Indicator
- UEU-Sensor, Forward Collision Alert
- UF2-Lighting, Cargo Box, LED
- UGA-Red Recovery Hooks
- UHX-Lane Keep Assist/Departure Warning
- UHY-Automatic Emergency Braking
- UKJ-Sensor, Front Pedestrian Braking
- UQF-Speaker System: Standard Sound System
- UTJ-Theft Protection System, Unauthorized Entry
- VK3-Front License Plate Mounting Provisions
- XCQ-Tire, Spare: 265/70 R17 All Season, Blackwall
- Z7X-Suspension Package: Off-Road, Two Inch Lift
- Z82-Trailer Package

Disclaimer:

GM has tried to make the pricing information provided in this summary accurate. Please refer to actual vehicle invoice; however, for complete pricing information, GM will not make any sales or policy adjustments in the case of inaccurate pricing information in this summary.



Vehicle Locator

Detail Report for Customer

GENE MESSER CHEVROLET
 1302 SOUTH LOOP 289, LUBBOCK, TX, 79412
 806-747-3211

Customer/Company: undefined
 Address: undefined

Sales Consultant:

Vehicle #1: 2024 Chevrolet Tahoe	VIN/Order #	MSRP	Stock #
	DDKR23	\$77,620.00	N/A
Additional Vehicle Information			
GM Marketing Information			

Body Style: CK10706-4WD

PEG: 2Z7-Z71 Preferred Equipment Group

Primary Color: GXD-Sterling Gray Metallic

Trim: H0Y-1LT/1SP/2LT/2Z7-Leather, Jet Black, Interior Trim

Engine: L87-Engine: 6.2L, EcoTec3 V-8, DI, Dynamic Fuel Mgt, V V T

Transmission: MHS-10-Speed Automatic

*\$77620
x Fees*

- Options: 2Z7-Z71 Preferred Equipment Group
 A2X-Power Seat Adjuster (Driver's Side)
 A45-Memory Settings, recalls presets for driver pwr seat
 A50-Seats: Front, Bucket, Full Feature
 AS8-Seat, 3rd row 60/40 Bench, power
 ATH-Keyless Open & Keyless Start
 ATN-Seat, 2nd row Bucket, power release
 AYQ-RESTRAINT SYSTEM SEAT, INFLATABLE, DRIVER & PASS FRT, FRT SEAT SIDE FRT INBOARD SEAT SIDE, ROOF SIDE
 B30-Floor Covering: Carpet, Color Keyed
 B58-Floor Mats, color-keyed, carpeted 1st and 2nd row
 BTV-Remote Engine Starting Pkg
 BVZ-Assist Steps, none
 C6H-GVW Rating 7500 Lbs
 CJ2-Climate Control, Electronic - Multi-zone
 DCH-Center Floor Console, Power Sliding w/drawer&storage
 DD8-ISR/ Mirror, Electro-chromatic
 DXR-Mirror, Outside, Power, Heated, Auto-Dimming w/Turn ind
 F47-Suspension feature, Air Ride Adaptive
 FE9-Federal Emissions
 G96-Electronic Limited Slip Differential
 GU5-Rear Axle: 3.23 Ratio
 GXD-Sterling Gray Metallic
 H0Y-1LT/1SP/2LT/2Z7-Leather, Jet Black, Interior Trim
 IOK-Chevrolet Infotainment, Enhanced connectivity 2.0
 JHD-Hill Descent Control
 JL1-Integrated Trailer Brake Controller
 K34-Cruise Control
 KA1-Heated Seats, Front
 KA6-Heated Seats: 2nd Row
 KC4-Cooler, Engine Oil
 KI3-Heated Steering Wheel
 K14-120 Volt Electrical Receptacle, In Cab
 KNP-Transmission Cooling System
 KW5-Alternator, 220 AMP
 L87-Engine: 6.2L, EcoTec3 V-8, DI, Dynamic Fuel Mgt, V V T
 MHS-10-Speed Automatic
 N10-Dual Exhaust System
 N38-Steering Column, Power Tilt & Telescoping
 NHT-Max Trailing Package

- NQH-Transfer Case: Active, 2-Speed, Autotrac, Rotary Dial
 NZU-Wheels, 20" x 9" Aluminum
 PRF-3 Years of Onstar Remote Access
 PZ8-Hitch Guidance with Hitch View and Image Adjustment
 QAE-Tires: 275/60 R20 All Terrain, Blackwall
 RC1-Skid Plate
 RGN-Off Road Performance Package
 RVS-LPO - Assist Steps, 4" Round, Tubular, Black
 T8Z-Buckle-To-Drive
 TC2-Liftgate, Rear, power
 TQ5-Headlamps, Intellibeam
 U2K-SiriusXM Satellite Radio (subscription)
 UD5-Parking Assist, Front & Rear Sensors
 UDV-Driver Information Center, 12" diagonal multi-color
 UE1-OnStar Communication System
 UE4-Following Distance Indicator
 UET-Smart Trailer Indicator
 UEU-Sensor, Forward Collision Alert
 UFG-Sensor, Rear Cross Traffic Alert
 UGA-Red Recovery Hooks
 UHX-Lane Keep Assist/Departure Warning
 UHY-Automatic Emergency Braking
 UK3-Radio Controls -Steering Wheel
 UKC-Lane Change Alert with Side Blind Zone Alert
 UKJ-Sensor, Front Pedestrian Braking
 UKK-Sensor, Pedestrian Detection
 UTJ-Theft Protection System, Unauthorized Entry
 UV2-Surround Vision, HD
 V03-Cooling system, extra capacity
 V54-Luggage Rack, side rails, painted
 VK3-Front License Plate Mounting Provisions
 WPD-Driver Alert Package
 WPL-Luxury Package
 WUA-Fascia, Front, custom
 YM8-LPO Processing Option
 Z6E-Off Road Capability Package
 Z82-Trailer Package
 Z95-Suspension Package, Magnetic Ride Control
 ZL6-Advanced Trailing Package

Disclaimer:

Sheriff's Office Sealed Bids for Vehicles
Please have the Bids turned into the Lamb County Texas, County Judges Office on
or before the 15th of December 2023 at 9:00am
Bids will be awarded at the Commissioners meeting on the 27th of December 2023

Please Provide price for vehicles and price for each trade Separately

VEHICLE SPECIFICATIONS

Two (2) 2024 year model CK10543 Chevrolet 4wd 1500 Silverado Custom Short Crew Trail Boss

Vehicles Trading

(One) 2019 Chevrolet Crew Cab 4x4 pickup VIN 1GCUYDED3KZ226805 Mileage 95K - \$20000
(One) 2020 Chevrolet Crew Cab TrailBoss pickup VIN 1GCPYCEF1LZ158742 Mileage 124K - \$20500

Option Code

GAZ Summit White
HOU Jet Black
AZ3 40/20/40 Split Bench Seat
2CX Custom Trail Boss Preferred Equipment group
GU5 Rear Axle 3.23
L84 5.3 L V8 Engine
MHT 10-speed Automatic Transmission
R30 LT275/65 R18 tires
RD1 18" X 8.5 Rims
AKO Glass Deep Tinted
B1J Rear Wheel house liner
BTV Remote Start
C49 Rear Defogger
NQH 2-speed transfer case
VK3 Front license plate bracket
Z7X Suspension Package
Z82 Trailing Package
PCX Convenience PKG
Wheel Locks
VT2 6" Assist Steps
CGN Spray on Bed Liner
NZZ Skid Plate
UF2 LED lighting cargo box
VQK LPO Molded Splash guards
PED Safety assist
QK2 Multi-Flex Tailgate
LPO Underseat storage

Sheriff's Office Sealed Bids for Vehicles
Please have the Bids turned into the Lamb County Texas, County Judges Office on
or before the 15th of December 2023 at 9:00am
Bids will be awarded at the Commissioners meeting on the 27th of December 2023

Please Provide price for vehicles and price for each trade Separately

VEHICLE SPECIFICATIONS

One (1) 2024 year model CK10706 Chevrolet 4wd Tahoe1LT Z71 Vehicle

Vehicle Trading

(One) 2016 Chevrolet Tahoe VIN 1GNSKBKC6GR364409 Mileage 118,000

Option

Code

-TRADE - \$15000

G6N Silver Sage Metallic
HOY Jet Black Interior
2Z7 Z71 Preferred Package
GU5 Rear Axle 3.23
L84 5.3 L V8 Engine
MHS 10-speed Automatic Transmission
QAE 275/60R20 All-Terrain blackwall tires
IOK Infotainment 2.0
WPL Luxury package
Wheel Locks
UTJ Theft protection package
Console organizer
2W7 Suspension package
AS8 Third Row 60/40 seat
-ATT 2nd row 60/40 Split folding seat
BTV Remote Start
CJ2 Climate control
JHD Hill Descent Control
JL1 Trailer Brake Control
K34 Cruise Control
K14 120 Volt in Cab Receptacle
NHT Max Trailer Package
NQH Transfer Case
RC1 Skid Plate
UV2 Surround Vision
VO3 Extra Capacity Cooling System
VK3 Front License Plate Mount
WPD Driver Alert Package
Z82 Trailer Package
ZL6 Advanced Trailering Package

